



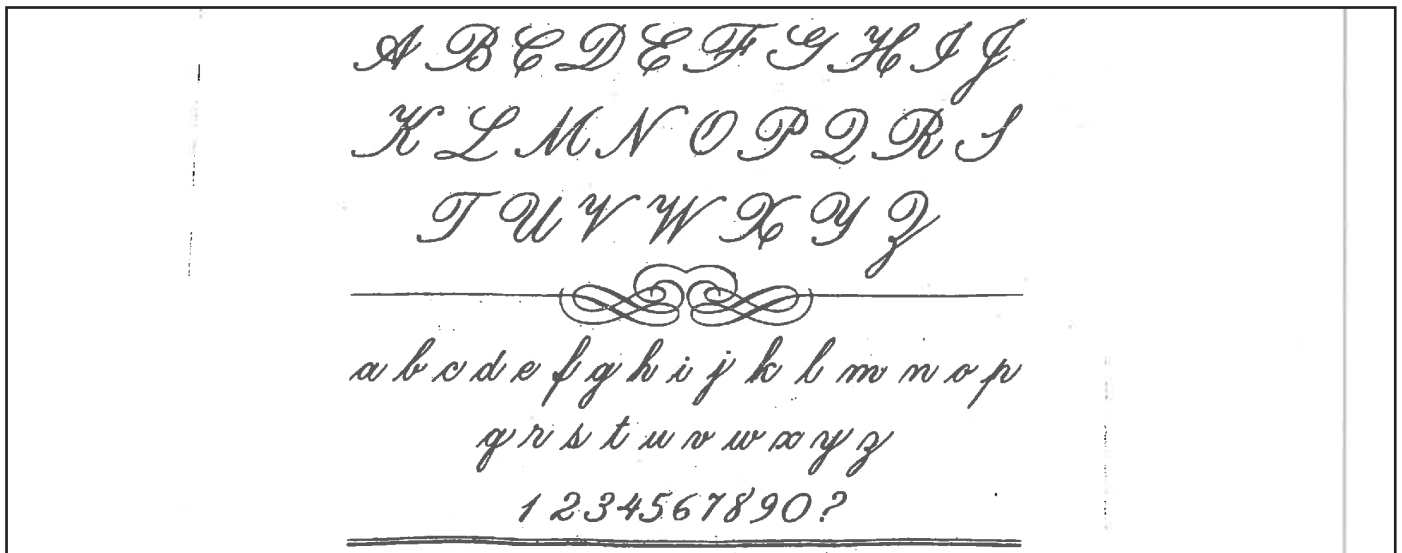
Communications

Lets get writing!



Can you imagine life without phones, social media, communication platforms that let us see each other at a click of a button? Well life in early New Zealand was very different and writing letters was the only way for people to communicate with friends and family who lived elsewhere. Letter writing was usually done by candlelight, with a pen and ink bottle was usually done on a Sunday evening.

TASK 1: Before we start to write our letter lets practice cursive writing which is how they would have written a letter with a pen and ink.



The cat has purple ears.



Communication

Letter to a loved one!



Most people had little schooling because farming and work were high priorities. Therefore, spelling was often poor, and the use of punctuation was also poor, which made understanding the contents rather difficult.

The typical letter would start by indicating when and where the letter was written, for example I would write "Auckland, Howick. April 8, 2020" in the top right-hand corner. This made it quite simple to identify where the letter came from and to whom it was going.

TASK 2: Choose someone you would like to send a letter to and tell them about what has been happening in your bubble. On a sperate piece of paper follow the layout below and create a letter as they did in 1840's. lets

The place the letter is being written, for example:
Auckland, Howick

Month
Day
Year

Urbana, Pa., May 4, 1876.

Who is the letter too

Start of the letter

My dear Brother,

Your beautiful birthday gift almost reconciles me to the fact that I am to-day a year older than I was last May.

How did you know what I wanted? Surely some good angel must have whispered the secret to you. However that may be, you exactly suited my taste, and I thank you with my whole heart.

Who is the letter from

Your loving sister,
Mary Hamilton.

Where is the letter going to?
for example: Auckland, Howick

Mr. Henry Hamilton,
New Haven, Conn.



Communication

lets get creative!



The first stamp designed in New Zealand was a halfpenny ($\frac{1}{2}d$) stamp issued on 1 January 1873. This had a side view of Queen Victoria's head and was known as the 'Newspaper' stamp because it was often used as payment for posting a newspaper.

During the 1890s, New Zealand became one of the first countries in the world to release stamps with images of the countryside, birds, and animals.

TASK 3: Stamps are used to commemorate events, so with this in mind create your own stamp which commemorates coming out of lockdown and to recognise our frontline workers.

